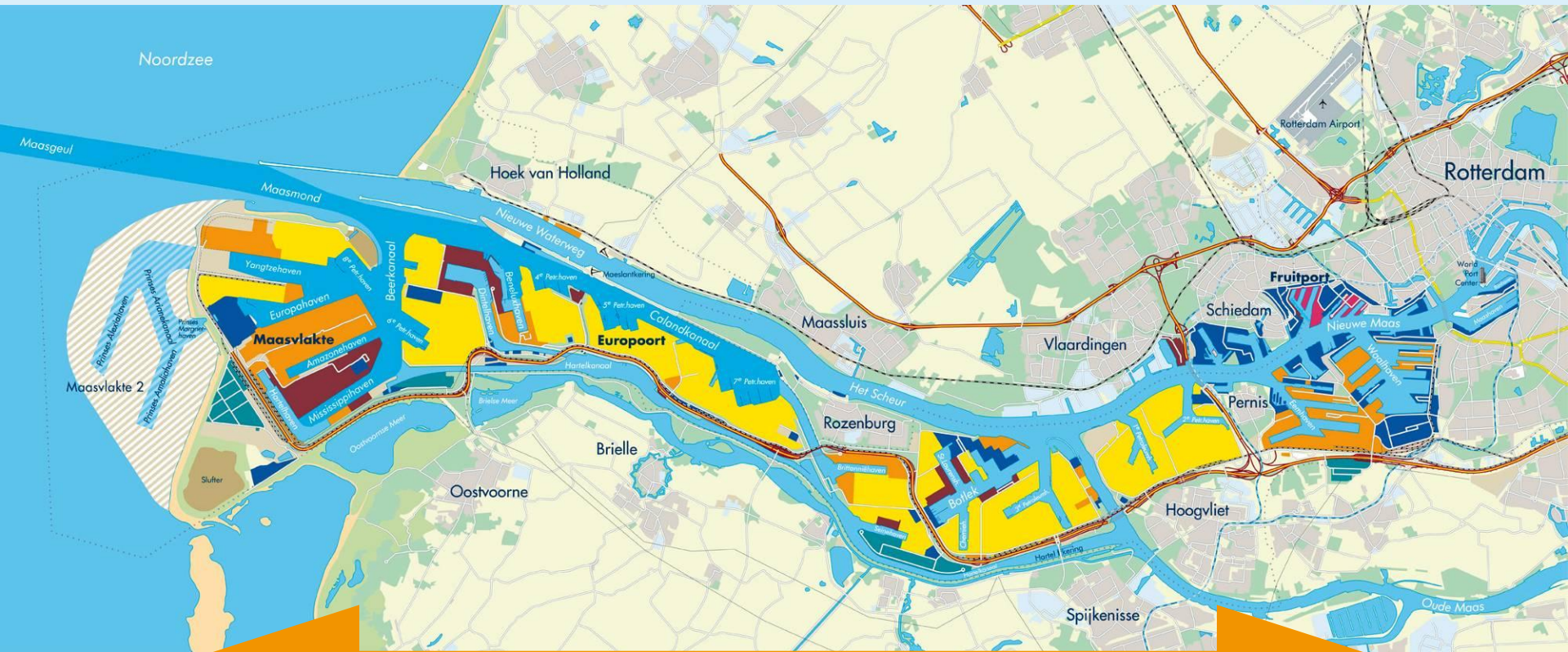


Nautical Services in the Port Rotterdam

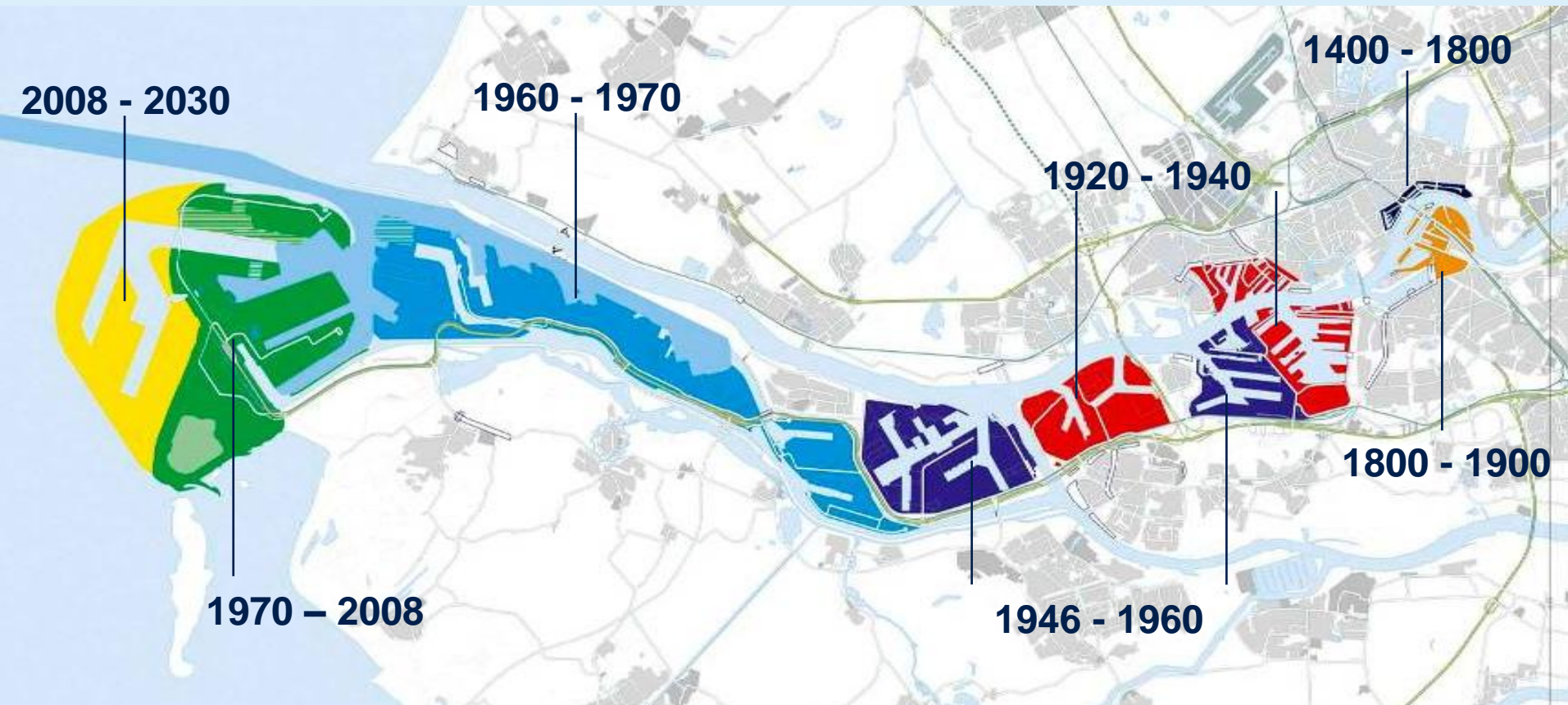
Port of Rotterdam Authority
Victor Schoenmakers

Port and Industrial Area



More than 50 kilometres !

Development of the port of Rotterdam





Maasvlakte



Waal-/Eemhaven



Europoort

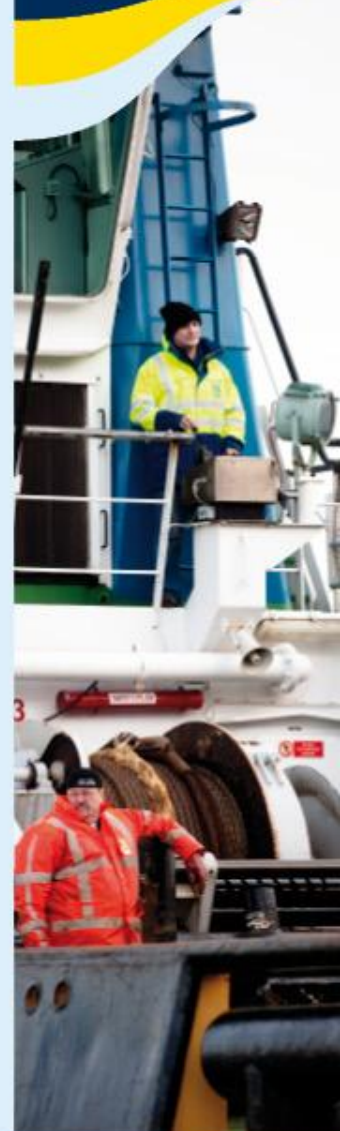


Botlek

Port in figures

Port of Rotterdam motor of the economy

- Total port area 26,000 acres (net 12,500 acres)
- Total employment 350,000 people (140,000 regionally)
- Total added value € 16 billion
- Throughput 434,6 million tons, 11,9 million TEU (2011)
- Depth up to 75 ft (= 24 m)



Nautical Services in Rotterdam

- Services 24 hours/ day and 7 days/ week
 - Pilotage
 - Towage
 - Boatmen / Linesmen
- Safe and secure handling of ships in the port priority for the Harbor Master in the port area.

Pilotage

- Regulated in Dutch (national) Pilotage Act
 - Innovative modernisation programme ongoing: more tailor made solutions in the four regions
- Pilotage is carried out by Netherlands Pilots Corporation
 - Private organisation with 470 registered pilots (220 in Rotterdam)
 - Tariffs controlled by Dutch Competition Authority
- Four Regions
 - North
 - Amsterdam - IJmond Region
 - Rotterdam - Rijnmond Region
 - Scheldt (entrance to the Port of Antwerp)

Boatmen / Linesmen

- Use of qualified boatmen (linesman) compulsory for all seagoing ships
 - Regulated in Rotterdam Port Management Bye-laws
 - Free market
 - Any company wishing to offer these services need to be able to operate in the whole port and to all customers.
- Mooring and unmooring activities in Rotterdam carried out by private Boatmen Association KRVE "Eendracht" since 1895
- Ca. 240 members/ partners
- Vocational training, certified by the Ministry of Education taught by the STC (Shipping and Transport College)

Towage

- Free market
 - In Rotterdam three different tug companies
 - Total 30 tugs available
 - Competitive tariffs

- No compulsory towage in Rotterdam
 - General guidelines
 - Pilot advises about actual number of tugs required

Thank you.

